

PubMed

使用介绍

如何进入PubMed?

<http://www.ncbi.nlm.nih.gov/entrez/query.fcgi?DB=pubmed>

- 在搜索引擎中输入“free medline”，即可找到上述网址。
- 图书馆主页中点击进入

一、概述

1. 由美国国立医学图书馆（NLM）所属国家生物技术信息中心（NCBI）建立；

<http://www.ncbi.nlm.nih.gov/>

NIH: 美国国立卫生研究所



2.收录范围

- **MEDLINE**
- **PreMedline**
- **Publisher supplied citations**

(1) MEDLINE

- 收录了全世界70个国家和地区的4300? 余种生物医学期刊，起始时间1950年，目前文摘条目1490+万篇，年报道量近40万条，英文刊物占90%、3/4有英文摘要，周更新。
- 内容涉及：医学、药学、牙医学、护理学、卫生保健、兽医学等专业。
- 记录标注[PubMed - indexed for MEDLINE]

(2) PreMEDLINE

- 是临时性医学文献数据库，每天接收新数据，经**MeSH**词表标引后，每周向**medline**移加一次。
- 记录标注 [**PubMed - in process**]

(3) Publisher Supplied Citation

- 出版商直接向PubMed递送的电子记录中不被Medline收录的部分。
- 记录标注 [PubMed - as supplied by publisher]

3. PubMed的特点

- 免费提供题录和文摘
- 可与提供原文的网址链接
(部分免费获取)
- 提供检索词自动转换匹配
- 操作简便、快捷

二、PubMed的基本检索功能

词语检索及自动词语匹配

作者姓名检索

杂志名称检索

截词检索

短语检索

逻辑运算符检索

1. 词语检索及自动词语匹配

- 在检索框中键入一到多个检索词，按“GO”键，即显示检索结果。“clear”按钮可以帮你清除查询框中的内容，然后开始一个新的查询。

Search PubMed for Go Clear

[Limits](#) [Preview/Index](#) [History](#) [Clipboard](#) [Details](#)

About Entrez

Entrez PubMed

- Overview
- Help | FAQ
- Tutorial
- New/Noteworthy

PubMed Services

- Journal Browser
- MeSH Browser
- Single Citation Matcher
- Batch Citation Matcher
- Clinical Queries
- Cubby

Related Resources

- Order Documents
- NLM Gateway
- Consumer Health
- Clinical Alerts
- ClinicalTrials.gov
- PubMed Central

- Enter one or more search terms, or click [Preview/Index](#) for advanced searching.
- Enter [author names](#) as smith jc. Initials are optional.
- Enter [journal titles](#) in full or as MEDLINE abbreviations. Use the [Journal Browser](#) to find journal titles.

PubMed, a service of the National Library of Medicine, provides access to over 11 million MEDLINE citations back to the mid-1960's and additional life science journals. PubMed includes links to many sites providing full text articles and other related resources.

Explore beyond PubMed



Can't tell BLAST from VAST?
[Coffee Break](#)

demonstrates online bioinformatic tools available at the NCBI through live searches

Free Full-text Articles

Try the new [PubMed Central](#), NLM's free and unrestricted online archive of journal articles. Links to full-text in PubMed Central are available from PubMed citations.

PubMed

Nucleotide

Protein

Genome

Structure

PopSet

Taxonomy

Search

PubMed

for

common cold vitamin c

Go

Clear

Limits

Preview/Index

History

Clipboard

PubMed Nucleotide Protein Genome Structure PopSet Taxonomy OMIM Books

Search PubMed for common cold vitamin c Go Clear

[Limits](#) [Preview/Index](#) [History](#) [Clipboard](#) [Details](#)

Display Summary Sort Save Text Clip Add Order

Show: 20 Items 1-20 of 198 Page 1 of 10 Select page: 1 2 3 4 5 6 7 8 9 10

- 1: [Jaber R.](#) [Related Articles, Links](#)
Respiratory and allergic diseases: from upper respiratory tract infections to asthma.
Prim Care. 2002 Jun;29(2):231-61.
PMID: 12391710 [PubMed - in process]
- 2: [Van Straten M, Josling P.](#) [Related Articles, Links](#)
Preventing the common cold with a vitamin C supplement: a double-blind, placebo-controlled survey.
Adv Ther. 2002 May-Jun;19(3):151-9.
PMID: 12201356 [PubMed - indexed for MEDLINE]
- 3: [Gaudernak E, Seipelt J, Triendl A, Grassauer A, Kuechler E.](#) [Related Articles, Links](#)
Antiviral effects of pyrrolidine dithiocarbamate on human rhinoviruses.
J Virol. 2002 Jun;76(12):6004-15.
PMID: 12021333 [PubMed - indexed for MEDLINE]
- 4: [Vitetta L, Sali A, Paspaliaris B, Reavley NJ.](#) [Related Articles, Links](#)
Megadose vitamin C in treatment of the common cold: a randomised controlled trial.
Med J Aust. 2002 Mar 18;176(6):298-9; discussion 299. No abstract available.
PMID: 11999270 [PubMed - indexed for MEDLINE]

About Entrez

Text Version

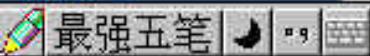
Entrez PubMed

[Overview](#)
[Help | FAQ](#)
[Tutorial](#)
[New/Noteworthy](#)
[E-Utilities](#)

PubMed Services

[Journals Database](#)
[MeSH Browser](#)
[Single Citation](#)
[Matcher](#)
[Batch Citation Matcher](#)
[Clinical Queries](#)
[LinkOut](#)
[Cubby](#)

Related Resources

[Order Documents](#)
[NLM Gateway](#)
[TOXNET](#)[ClinicalTrials.gov](#)[PubMed Central](#)

自动词语匹配

- PubMed能自动利用它的“自动词语匹配”功能将重要的词语结合在一起，并将不规范的词语转换成规范的用词。

如：输入 **vitamin c common cold**，系统会将自动转换成(“**ascorbic acid**”[**MeSH Terms**] OR **vitamin c**[**Text Word**]) AND (“**common cold**”[**MeSH Terms**] OR **common cold** [**Text Word**])进行检索。这种处理能使检索结果更精确和全面。

Search PubMed for Go Clear[Limits](#) [Preview/Index](#) [History](#) [Clipboard](#) [Details](#)[About Entrez](#)[Text Version](#)[Entrez PubMed](#)[Overview](#)[Help | FAQ](#)[Tutorial](#)[New/Noteworthy](#)[E-Utilities](#)[PubMed Services](#)[Journals Database](#)[MeSH Browser](#)[Single Citation](#)[Matcher](#)[Batch Citation Matcher](#)**PubMed Query:**

```
(( "common cold" [MeSH Terms] OR common cold[Text Word]) AND ("ascorbic acid" [MeSH Terms] OR vitamin C[Text Word]))
```

Search

URL

Result:[198](#)**Translations:**



My NCBI
[\[Sign In\]](#) [\[Register\]](#)

All Databases PubMed Nucleotide Protein Genome Structure OMIM PMC Journals Books

Search PubMed for lung cancer Go Clear Save Search

Limits Preview/Index History Clipboard Details

Query Translation:

```
("lung neoplasms"[TIAB] NOT Medline[SB]) OR "lung neoplasms"[MeSH Terms] OR lung cancer[Text Word]
```

Search URL

Result:

[108934](#)

Translations:

lung ("lung neoplasms"[TIAB] NOT Medline[SB]) OR "lung neoplasms"[MeSH Terms] OR lung cancer[Text Word]
cancer Word]

Database:

PubMed

User query:

lung cancer

- About Entrez
- Text Version
- Entrez PubMed
 - Overview
 - Help | FAQ
 - Tutorial
 - New/Noteworthy
 - E-Utilities
- PubMed Services
 - Journals Database
 - MeSH Database
 - Single Citation Matcher
 - Batch Citation Matcher
 - Clinical Queries
 - Special Queries
 - LinkOut
 - My NCBI (Cubby)
- Related Resources
 - Order Documents
 - NLM Catalog
 - NLM Gateway
 - TOXNET
 - Consumer Health



My NCBI
[\[Sign In\]](#) [\[Register\]](#)

All Databases PubMed Nucleotide Protein Genome Structure OMIM PMC Journals Books

Search PubMed for "lung cancer" Go Clear Save Search

Limits Preview/Index History Clipboard Details

- About Entrez
- Text Version
- Entrez PubMed
 - Overview
 - Help | FAQ
 - Tutorial
 - New/Noteworthy
 - E-Utilities
- PubMed Services
 - Journals Database
 - MeSH Database
 - Single Citation Matcher
 - Batch Citation Matcher
 - Clinical Queries
 - Special Queries
 - LinkOut
 - My NCBI (Cubby)
- Related Resources
 - Order Documents
 - NLM Catalog
 - NLM Gateway
 - TOXNET
 - Consumer Health

Query Translation:

```
"lung cancer" [All Fields]
```

Search URL

Result:

[43336](#)

Database:

PubMed

User query:

"lung cancer"

2. 作者姓名检索

在检索框内按照姓+名缩写(不用标点)的格式键入作者姓名，如**Smith ja**，系统会自动在作者字段内进行检索。

- [1: Staswick PE, Papa C, Huang JF, Rhee Y.](#) [Related Articles, Links](#)
 Purification of the Major Soybean Leaf Acid Phosphatase That Is Increased by Seed-Pod Removal.
 Plant Physiol. 1994 Jan;104(1):49-57.
 PMID: 12232060 [PubMed - as supplied by publisher]

- [2: Kong XY, Liao LM, Lei DL, Huang JF, Wen XD.](#) [Related Articles, Links](#)
 [Influence of lead on activity of nitric oxide synthase in neurons and vessel smooth muscle of small intestine in rats]
 Hunan Yi Ke Da Xue Xue Bao. 2000 Apr 28;25(2):135-7. Chinese.
 PMID: 12212199 [PubMed - in process]

3. 杂志名检索

- 在检索框中键入杂志全名 **molecular biology of the cell**
- 也可以直接键入 **Medline** 的期刊标准缩写形式，如：**mol boil cell**，
- 键入刊物的 **ISSN**(国际标准出版物代码) 进行检索，如 **1059-1524**

Search PubMed for cell transplantation [ta] Go Clear

Limits Preview/index History Clipboard Details

Display Summary Sort Save Text Clip Add Order

Show: 20 Items 1-20 of 749 Page 1 of 38 Select page: 1 2 3 4 5 6 7 8 9 10 »

- 1: [Ushida T, Furukawa K, Toita K, Tateishi T.](#) Related Articles, Links
 Three-dimensional seeding of chondrocytes encapsulated in collagen gel into PLLA scaffolds.
 Cell Transplant. 2002;11(5):489-94.
 PMID: 12382679 [PubMed - in process]

- 2: [Totsugawa T, Kobayashi N, Okitsu T, Noguchi H, Watanabe T, Matsumura T, Maruyama M, Fujiwara T, Sakaguchi M, Tanaka N.](#) Related Articles, Links
 Lentiviral transfer of the LacZ gene into human endothelial cells and human bone marrow mesenchymal stem cells.
 Cell Transplant. 2002;11(5):481-8.
 PMID: 12382678 [PubMed - in process]

About Entrez

Text Version

Entrez PubMed

Overview
 Help | FAQ
 Tutorial
 New/Noteworthy
 E-Utilities

PubMed Services

Journals Database
 MeSH Browser
 Single Citation
 Matcher
 Batch Citation Matcher

注意事项:

- 如果杂志名称恰好是MeSH词表中的词，如：**Gene Therapy**，**Science**，**Cell**等，PubMed会首先将这些词转换成MeSH词表中的主题词进行检索；此外，如果杂志名是一个单词，如“**Scanning**”，系统将会在所有的字段中进行检索。以上两种情况下，需要将检索请求进行标准化处理，即在杂志名后面加**[ta]**（杂志名称字段标识符）。
- 在早年的文献中，没有**ISSN**号。
- 如果杂志全名中包括括弧或方括号，键入时应该予以取消，例如杂志名为：**J Hand Surg [Am]**，检索时应转成：**J Hand Surg Am**

自动转换功能的先后顺序

- PubMed系统采用以下几种词表（索引）之间的相互转换，来保证查全、查准率。

（1）MeSH词转换表

MeSH词转换表包含MeSH词和组成MeSH主题词和副主题词以及统一医学词汇系统（UMLS）的同义词、英语变异词以及物质名称等词汇，如果键入的检索词与该表中的词相匹配，则检索词作为MeSH词和文本词（Text Word）同时进行检索。例如输入检索词：vitamin h，PubMed将转换为（“Biotin”[MeSH Terms] OR vitamin h[Text Word]）进行检索，因为vitamin h与MeSH词表中的Biotin是同义词。提示：点击特征栏上的Details功能键，可以了解输入的词被转换后进行检索的详细情况。

自动转换功能的先后顺序

(2) 杂志名称转换表

该表包括杂志全称、**MEDLINE**杂志缩写形式和**ISSN**号。

自动转换功能的先后顺序

(3) 短语表

如果输入的词在 **MeSH** 和杂志名称转换表中都没有找到合适的匹配词，系统将在短语表中进行查找。该表中的短语来源于 **MeSH**、**UMLS** 以及物质名称等。

自动转换功能的先后顺序

(4) 作者索引

如果系统对输入的短语在以上表中检索都没有被命中, 并且有一个或两个字母在词后, **PubMed** 将在作者索引表中进行查找, 如果仍然没有发现合适的匹配, **PubMed** 将用**AND**将单个词联接起来在所有字段中进行查找。

4. 截词检索

- 截词符 “*” 代表多个字符，将*加在检索词后表示对所有以该词开头的词进行检索；
如：**bacter***，可以检出**bacter**，**bacteria**，**bacterium**，**bacteriophage**等词。

5. 短语检索

- 用 “ ” 把检索词括起来，强制PubMed进行词组检索。如 “**single cell**”。
- 当用双引号括起词语时，PubMed将不执行自动词语匹配功能。

6. 逻辑运算符检索

- 在检索框中输入逻辑运算符，注意要大写，执行顺序从左向右，可用括号来改变此顺序。
- 如：**lung cancer AND smok***
#1 OR #2
(#1 OR #2) AND #3

三、PubMed辅助检索工具

- 限定(**Limits**)
- 预览/索引(**preview/index**)
- 检索历史(**history**)
- 粘贴板(**Clipboard**)
- 细节(**Details**)

1. Limits（限定检索）

- 字段限制：著者、刊名、篇名等23个字段
- 数据输入时间：默认检索可回溯到1966年，限制选择30天-10年
- 7种文献类型限制
- 7种语种
- 12种子集

Search PubMed for placenta growth oxygen Go Clear

Limits Preview/Index History Clipboard Details

About Entrez

Entrez PubMed

- Overview
- Help | FAQ
- Tutorial
- New/Noteworthy

PubMed Services

- Journal Browser
- MeSH Browser
- Single Citation Matcher
- Batch Citation Matcher
- Clinical Queries
- LinkOut
- Cubby

Related Resources

- Order Documents
- NLM Gateway
- Consumer Health
- Clinical Alerts
- ClinicalTrials.gov
- PubMed Central

- Use All Fields pull-down menu to specify a field.
- Boolean operators AND, OR, NOT must be in upper case.
- If search fields tags are used enclose in square brackets, e.g., rubella [ti].
- Search limits may exclude in process and publisher supplied citations.

Limited to:

All Fields	<input type="checkbox"/> only items with abstracts	
Publication Types	Languages	Subsets
Ages	Human or Animal	Subsets
Entrez Date		AIDS
Publication Date	From [] [] [] To [] [] []	Bioethics
Use the format YYYY/MM/DD; month and day are optional.		
		Complementary Medicine
		Core clinical journals
		Dental journals
		MEDLINE
		Nursing journals
		In process
		Publisher
		PubMed Central

2. Preview/index (检索策略预览)

- 浏览检索式
- 改变检索式 (可用检索式编号如:
#1 OR #2)
- 浏览索引 (index)



PubMed Nucleotide Protein Genome Structure PopSet Taxonomy OMIM Books

Search PubMed for placenta growth oxygen genbacev o Preview Go Clear

Limits **Preview/Index** History Clipboard Details

- Enter terms and click Preview to see only the number of search results.
- To combine searches use # before search number, e.g., (#2 OR #3) AND asthma.

Search	Most Recent Queries	Time	Result
#11	Search 1975[pdat] AND Chang PY [auth] Field: Title Word	04:16:44	1
#10	Search Taiwan I Hsueh Hui Chih[jour] AND 1975 [pdat] AND Chang PY [auth] Field: Title Word	04:15:25	0
#9	Search placenta growth oxygen genbacev o	04:06:03	1

Add Term(s) to Query or View Index:

- Enter a term in the text box; use the pull-down menu to specify a search field.
- Click Preview to add terms to the query box and see the number of search results, or click Index to view terms within a field.

All Fields Preview Index

Click to add a term to the query box.

About Entrez

Entrez PubMed

Overview
Help | FAQ
Tutorial
New/Noteworthy

PubMed Services

Journal Browser
MeSH Browser
Single Citation
Matcher
Batch Citation Matcher
Clinical Queries
LinkOut
Cubby

Related Resources

Order Documents
NLM Gateway
Consumer Health
Clinical Alerts
ClinicalTrials.gov
PubMed Central

3. History

- 检索式回顾
- 编辑检索式

如： #3 AND child



About Entrez

Entrez PubMed
 Overview
 Help | FAQ
 Tutorial
 New/Noteworthy

PubMed Services
 Journal Browser
 MeSH Browser
 Single Citation
 Matcher
 Batch Citation Matcher
 Clinical Queries
 LinkOut
 Cubby

Related Resources
 Order Documents
 NLM Gateway
 Consumer Health
 Clinical Alerts
 ClinicalTrials.gov
 PubMed Central

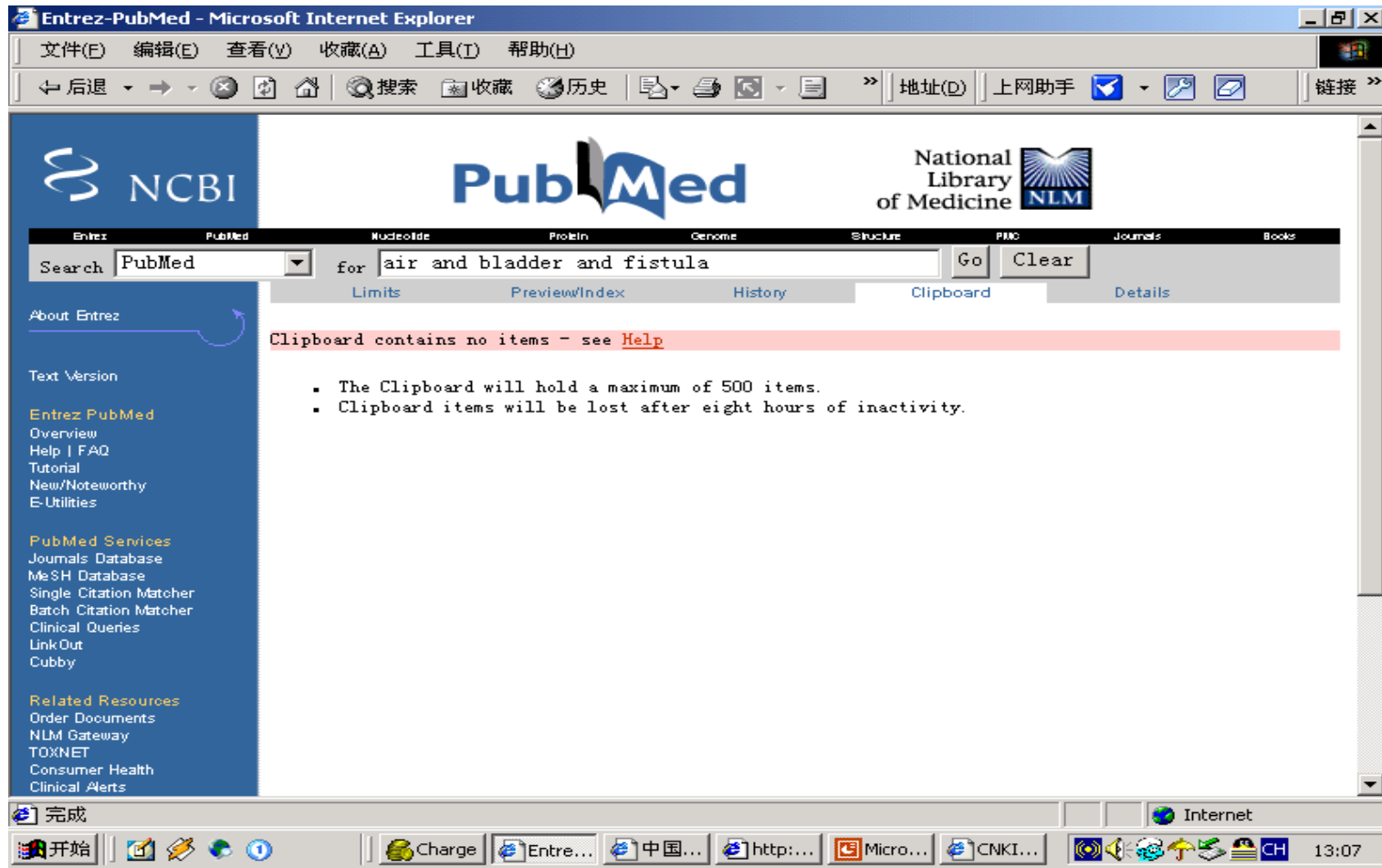
Privacy Policy

- Search History will be lost after one hour of inactivity.
- To combine searches use # before search number, e.g., #2 AND #6.
- Search numbers may not be continuous; all searches are represented.

Search	Most Recent Queries	Time	Result
#11	Search 1975[pdat] AND Chang PY [auth] Field: Title Word	04:16:44	1
#10	Search Taiwan I Hsueh Hui Chih[jour] AND 1975 [pdat] AND Chang PY [auth] Field: Title Word	04:15:25	0
#9	Search placenta growth oxygen genbacev o	04:06:03	1
#6	Search placenta growth oxygen	04:02:56	241
#8	Search hypertension therapy	03:02:45	95877
#7	Search hypertension/therapy	03:02:23	59111
#5	Search (((("placenta"[MeSH Terms] OR placenta [Text Word]) AND ("growth and development"[Subheading] OR "growth"[MeSH Terms]) OR growth[Text Word])) AND (((("oxygen"[MeSH Terms] OR "oxygen inhalation therapy"[MeSH Terms]) OR "Oxygen"[MeSH Terms]) OR oxygen[Text Word])) Limits: ignored	01:54:07	241
#3	Search placenta growth oxygen Field: All Fields	01:53:41	241
#1	Search placenta growth oxygen genbacev o Field: All Fields	01:39:02	1

4. Clipboard

作用：存放检索结果，以便集中打印存盘或订购



5. Details

- 显示检索词转换匹配运算详细过程

- 用途：转换、确定规范词

如：liver cancer 

liver neoplasms

- 修改检索策略



Search PubMed for placenta growth oxygen Go Clear

Limits Preview/Index History Clipboard Details

- About Entrez
- Entrez PubMed
 - Overview
 - Help | FAQ
 - Tutorial
 - New/Noteworthy
- PubMed Services
 - Journal Browser
 - MeSH Browser
 - Single Citation Matcher
 - Batch Citation Matcher
 - Clinical Queries
 - LinkOut
 - Cubby
- Related Resources
 - Order Documents
 - NLM Gateway
 - Consumer Health
 - Clinical Alerts
 - ClinicalTrials.gov
 - PubMed Central
- Privacy Policy

PubMed Query:

```
((("placenta"[MeSH Terms] OR placenta[Text Word])
AND (("growth and development"[Subheading]
OR "growth"[MeSH Terms]) OR growth[Text Word]))
AND (((("oxygen"[MeSH Terms] OR "oxygen inhalation
therapy"[MeSH Terms]) OR "Oxygen"[MeSH Terms]) OR
oxygen[Text Word]))
```

Search URL

Result:

[241](#)

Translations:

placenta[All Fields]	((("placenta"[MeSH Terms] OR placenta[Text Word])
growth[All Fields]	((("growth and development"[Subheading] OR "growth"[MeSH Terms]) OR growth[Text Word])
oxygen[All Fields]	((("oxygen"[MeSH Terms] OR "oxygen inhalation therapy"[MeSH Terms]) OR "Oxygen"[MeSH Terms]) OR oxygen[Text Word])

Database:

PubMed

User Query:

placenta growth oxygen

四、其它检索功能

- **Journal Database:** 期刊检索
- **MeSH Database:** 主题词检索
- **Citation Matcher:** 单篇/多篇
引文匹配器
- **Clinical Queries:** 临床咨询

1. 期刊数据库 (Journal database)

- 通过输入刊名、缩写名、ISSN等浏览期刊文献。



PubMed Nucleotide Protein Genome Structure PMC Taxonomy OMIM Books

Search Journals for clin exp immunol Go Clear

Limits Preview/Index History Clipboard Details

- About Entrez
- Text Version
- Entrez PubMed
 - Overview
 - Help | FAQ
 - Tutorial
 - New/Noteworthy
 - E-Utilities
- PubMed Services
 - Journals Database
 - MeSH Browser
 - Single Citation
 - Matcher

- Use All Fields pull-down menu to specify a field.
- Boolean operators AND, OR, NOT must be in upper case.
- If search fields tags are used enclose in square brackets, e.g., rubella [ti].
- More help on using limits is available [here](#).

Limited to:

- MEDLINE Abbr
- All Fields
- Filter
- ISO Abbr
- ISSN
- MEDLINE Abbr
- NLM ID
- Title

Only PubMed journals

Search Journals for

Limits

Suggestions: [Clin exp immunol](#), [Clin immunol](#), [Immunol clin](#), [Exp clin immunogenet](#), [J clin immunol](#), [Clin immunol immunopathol](#), [Clin immunol rev](#), [Prog clin immunol](#), [Z immunitatsforsch exp klin immunol](#), [Diagn clin immunol](#), [more...](#)

Field: **MEDLINE Abbr**

Show:

- Select a database (e.g., PubMed) under the Links menu to retrieve records for that journal.
- Click on the NLM ID to display journal information from [Locatorplus](#).

1: [Clinical and experimental immunology.](#) Links

pISSN: 0009-9104
 eISSN: 1365-2249
 MEDLINE Abbr: Clin Exp Immunol
 ISO Abbr: Clin. Exp. Immunol.
 NLM ID: [0057202](#)

About Entrez

Text Version

Entrez PubMed

- Overview
- Help | FAQ
- Tutorial
- New/Noteworthy
- E-Utilities

PubMed Services

- Journals Database
- MeSH Browser
- Single Citation Matcher
- Batch Citation Matcher
- Clinical Queries
- LinkOut
- Cubby

Related Resources

- Order Documents
- NLM Gateway
- TOXNET

2. Mesh Database

- 功能：确定规范的主题词、副主题词、查看词义注释、树状结构表等

例如：检索有关SARS的药物治疗情况

Search for

[Limits](#) [Preview/Index](#) [History](#) [Clipboard](#) [Details](#)

Suggestions: [Sars virus](#); [Sark](#); [Sarin](#); [Sarile](#); [Saroten](#); [Sarcoma](#); [Sarcina](#); [Sarsaparilla](#); [Sarcomas](#); [Sardinia](#); [more...](#)

Display Show: Send to

- Build a search strategy using the [Send to Search Box](#) feature.
- Select a database (e.g., PubMed) under the Links menu to retrieve items with that term.

1: [SARS virus](#) [Links](#)
 A species of CORONAVIRUS causing atypical respiratory disease (SEVERE ACUTE RESPIRATORY SYNDROME) in humans. The organism is believed to have first emerged in Guandong Province, China, in 2002.
 Year introduced: 2003

About Entrez

Text Version

Entrez PubMed

Overview

Help | FAQ

Tutorial

New/Noteworthy

E-Utilities

PubMed Services

Journals Database

MeSH Database

Single Citation

Matcher

Batch Citation Matcher

Clinical Queries

LinkOut

Cubby

Related Resources

Order Documents

NLM Gateway

TOXNET

Consumer Health

Clinical Alerts

ClinicalTrials.gov

SARS virus/drug effects [MeSH]

Search PubMed Clear

Display Full Show: 20 Send to Search Box with AND

- If making selections (e.g., Subheadings, etc.), use the [Send to Search Box](#) feature to see PubMed records with those specifications.
- Select PubMed under the Links menu to retrieve all records for the MeSH Term.
- Select [NLM MeSH Browser](#) under the Links menu for additional information.

1: SARS virus [Links](#)

A species of CORONAVIRUS causing atypical respiratory disease (SEVERE ACUTE RESPIRATORY SYNDROME) in humans. The organism is believed to have first emerged in Guandong Province, China, in 2002.
Year introduced: 2003

[Subheadings:](#)

- drug effects genetics immunology isolation and purification
- pathogenicity

- Restrict Search to Major Topic headings only
- Do Not Explode this term (i.e., do not include MeSH terms found below this term in the MeSH tree).

about Entrez
next Version
Entrez PubMed
overview
help | FAQ
tutorial
new/Noteworthy
Utilities

PubMed Services
Journals Database
MeSH Database
Single Citation
atcher
atch Citation Matcher
inical Queries
nkOut
ubby

Related Resources
rder Documents
LM Gateway
OXNET
onsumer Health
inical Alerts
inicalTrials.gov
ubMed Central

Privacy Policy

3. 引文匹配器 (Citation Matcher)

- 作用：输入题录信息，查找特定文献
- 检索步骤：
 - 点击页面左边的“Single Citation Matcher”
 - 按界面提示分别填入所知信息
 - 点击[Search]按钮，可得到相应的特定文献信息。

可单篇查找，也可批量完成。



Citation Matcher for Single Articles

Enter PubMed Nucleotide Protein Genome Structure PDB Journals Books

Enter information about the article you wish to find.

Journal:

Date:

Volume: Issue: First page:

Author's last name and initials (e.g., Smith BJ)

Title words:

Search

Clear

Notes:

- You may omit any item if you wish
- Journal titles may be entered in full or as valid MEDLINE abbreviations
- For Date, you may enter yyyy, yyyy/mm, or yyyy/mm/dd. For example, 1998, 1998/03, or 1998/03/06



Internet

4. 临床查询 (Clinical Queries)

- 是专为临床医生设置的
- 可以检索某一临床主题领域的治疗、诊断、疾病和预后4个方面内容的文献，同时还可选择强调敏感度（查全）或是专指度（查准）
- 也可以检索该主题词领域的系统性综述等类型文献。


文件(E) 编辑(E) 查看(V) 收藏(A) 工具(T) 帮助(H)

后退 搜索 收藏 历史

地址(D) <http://www.ncbi.nlm.nih.gov/entrez/query/static/clinical.html> 转到

上网助手

链接 Windows 免费的HotMail 自定义链接



NCBI

Entrez PubMed Nucleotide Protein Genome Structure PACC Journals Books

About Entrez

Text Version

Entrez PubMed
Overview
Help | FAQ
Tutorial
New/Noteworthy
E-Utilities

PubMed Services
Journals Database
MeSH Database
Single Citation Matcher
Batch Citation Matcher
Clinical Queries
LinkOut
Cubby

Related Resources
Order Documents
NLM Gateway

PubMed Clinical Queries

Select from two filters to limit your retrieval. Choose either Clinical Queries or Systematic Reviews. Enter your search topic in the box below and click Go.

Clinical Queries using Research Methodology Filters

This specialized search is intended for clinicians and has built-in search "filters" based largely on [Haynes RB et al.](#) Four study categories are provided, and the emphasis may be more sensitive (i.e., most relevant articles but probably some less relevant ones) or more specific (i.e., mostly relevant articles but probably omitting a few). See the [filter table](#) for details.

Indicate the category and emphasis below:

Category: therapy diagnosis etiology prognosis
 Emphasis: sensitivity specificity

Systematic Reviews

This feature retrieves systematic reviews and meta-analysis studies for your search topic(s). For more information, see [Help](#).

五、检索结果的处理

- 显示
- 保存
- 打印

1. 显示检索结果(Display)

- PubMed可用10多种不同的格式显示检索结果，默认Summary格式。

- About Entrez
- Text Version
- Entrez PubMed
 - Overview
 - Help | FAQ
 - Tutorial
 - New/Noteworthy
 - E-Utilities
- PubMed Services
 - Journals Database
 - MeSH Database
 - Single Citation
 - Matcher
 - Batch Citation Matcher
 - Clinical Queries
 - LinkOut
 - Cubby

Display	Summary	Show: 20	Sort	Send to	Text
<input type="checkbox"/> 1: Lamh	Summary Brief Abstract Citation ASN.1 MEDLINE XML UI List LinkOut Related Articles Domain Links 3D Domain Links GEO DataSet Links Genome Links GEO Links Nucleotide Links OMIM Links PMC Links Cited in PMC PopSet Links Protein Links SNP Links Structure Links UniSTS Links	6	Sort Author Journal Pub Date	Page	Text File Clipboard E-mail Order
<input type="checkbox"/> 2: Brig	Summary Zheng S, Tisch RM tumor necrosis factor-related apoptosis-inducing diabetes. 9):2274-8. - indexed for MEDLINE]				Related Articles, Links
<input type="checkbox"/> 3: Vill	Summary S, Strasser A. ceptor-mediated apoptosis in nonobese diabetic				Related Articles, Links



Enterz PubMed Nucleotide Protein Genome Structure PMC Journals Books




Search PubMed for "Diabetes Mellitus, Insulin-Dependent" [MeSH] A Go Clear

Limits Preview/Index History Clipboard Details

Display Summary Show: 20 Sort Send to Text

Items 1-20 of 8483

Page 1 of 425 Next

- 1: [Chowdhury TA, Escudier V.](#) [Related Articles, Links](#)
-  Poor glycaemic control caused by insulin induced lipohypertrophy. *BMJ*. 2003 Aug 16;327(7411):383-4. No abstract available. PMID: 12919996 [PubMed - indexed for MEDLINE]
- 2: [Morin J, Chimenes A, Boitard C, Berthier R, Boudaly S.](#) [Related Articles, Links](#)
-  Granulocyte-dendritic cell unbalance in the non-obese diabetic mice. *Cell Immunol*. 2003 May;223(1):13-25. PMID: 12914754 [PubMed - indexed for MEDLINE]
- 3: [Friess U, Beck A, Kohne E, Lehmann R, Koch S, Haring HU, Schmuelling RM, Schleicher E.](#) [Related Articles, Links](#)
-  Novel hemoglobin variant [beta66 (E10) Lys-->Asn], with decreased oxygen affinity, causes falsely low hemoglobin A1c values by HPLC. *Clin Chem*. 2003 Aug;49(8):1412-5. No abstract available. PMID: 12881463 [PubMed - indexed for MEDLINE]
- 4: [Sacks DB.](#) [Related Articles, Links](#)

2. 检索结果输出 (send to)

- Text
- File
- Clipboard
- Email

NCBI
About Entrez
Text Version
Entrez PubMed
Overview
Help | FAQ
Tutorial
New/Noteworthy
E-Utilities
PubMed Services
Journals Database
MeSH Database
Single Citation
Matcher



PubMed Nucleotide Protein Genome Structure PMC Taxonomy OMIM Books
Search PubMed for placenta growth oxygen genbacev o Go Clear
Limits Preview/Index History Clipboard Details

Display Summary Show: 20 Sort Send to E-mail
Items 1-2 of 2

Text
File
Clipboard
E-mail
Order

- 1: [Genbacev O.](#)
To proliferate or to divide - to be or not to be.
Early Pregnancy. 2001 Jan;5(1):63-4.
PMID: 11753517 [PubMed - indexed for MEDLINE]
- 2: [Genbacev O, Zhou Y, Ludlow JW, Fisher SJ.](#) [Related Articles](#), [Links](#)
Regulation of human placental development by oxygen tension.
Science. 1997 Sep 12;277(5332):1669-72.
PMID: 9287221 [PubMed - indexed for MEDLINE]

Send to file

The screenshot shows a Microsoft Internet Explorer browser window displaying the NCBI Entrez PubMed website. The address bar shows the URL: `http://www.ncbi.nlm.nih.gov/entrez/query.fcgi?CMD=Display&DB=PubMed`. The page content includes a search bar with 'PubMed' entered, a 'Display' dropdown set to 'MEDLINE', and a search result for 'Lau TN et al. Is Your Interventional Radiology Service Ready for SARS?: The Singapore Experience.' with a PMID of 14534816. A 'File Download' dialog box is overlaid on the page, asking: '正在下载文件: query.fcgi 来自 www.ncbi.nlm.nih.gov. 您想要打开文件还是将它保存到您的计算机?' (Downloading file: query.fcgi from www.ncbi.nlm.nih.gov. Do you want to open the file or save it to your computer?). The dialog box has buttons for '打开(O)' (Open), '保存(S)' (Save), '取消' (Cancel), and '详细信息(M)' (Details). A checkbox '在打开这种类型的文件前始终询问(A)' (Always ask before opening this type of file) is checked. The Windows taskbar at the bottom shows the Start button, SnagIt, and other open applications, with the system clock at 15:37.

六. 获取原文及相关资源

- 联机获取原文 (linkout)
- 相关文献查找 (related article)
- NCBI其他数据库资源 (生物信息学等)